



Colorado Spatial Reference Network
of the Professional Land Surveyors of Colorado, Inc.

Colorado Spatial Reference Network (CSRN)

Introduction

January, 2010



Colorado Spatial Reference Network
of the Professional Land Surveyors of Colorado, Inc.

CSRN Goals:

- 1) Advocate the use of GNSS real time reference network positioning.
- 2) Build partnerships with federal, state, local agencies, private sector companies and *geospatial industries*.
- 3) Support and further develop the use of GNSS real time reference networks throughout Colorado and the surrounding states.



Colorado Spatial Reference Network
of the Professional Land Surveyors of Colorado, Inc.

The CSRN is one of the seven Chapters of the Professional Land Surveyors of Colorado (PLSC), Inc.

www.CSRN.us

The PLSC is a non-profit organization dedicated to the improvement of land surveying education and practice.

www.PLSC.net



Colorado Spatial Reference Network
of the Professional Land Surveyors of Colorado, Inc.

PLSC Chapters:

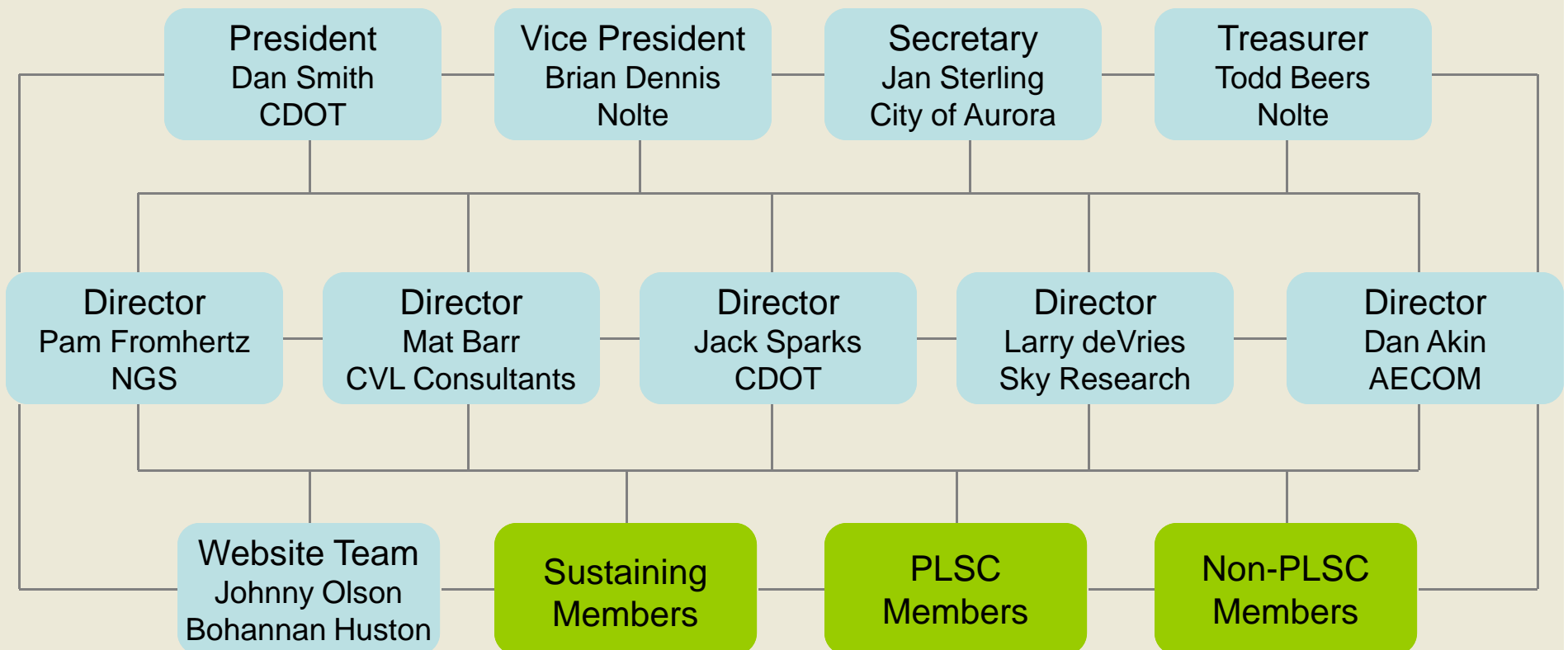
- Central Colorado Professional Surveyors (CCPS)
- *Colorado Spatial Reference Network (CSRN)*
- Northern Chapter - PLSC (NC/PLSC)
- Northwest 1/4 Colorado Land Surveyors
- Southern Chapter Professional Land Surveyors (SCPLS)
- Southwestern Chapter - PLSC, Inc. (SWC/PLSC)
- Western Colorado Land Surveyors (WCLS)



Colorado Spatial Reference Network

of the Professional Land Surveyors of Colorado, Inc.

CSRN Organization:





Colorado Spatial Reference Network
of the Professional Land Surveyors of Colorado, Inc.

Number of real time reference networks operating in Colorado?

***Answer* * = 4**

- ✓ Mesa County RTVRN
- ✓ Leica SpiderNet
- ✓ Trimble VRSNow
- ✓ King Surveyors VRS



Colorado Spatial Reference Network
of the Professional Land Surveyors of Colorado, Inc.

Who are some of the contributing partners*?

Answer * =

- ✓ Aztec Surveying
- ✓ Canon City
- ✓ Carroll & Lange
- ✓ CDOT Region 3
- ✓ CDOT Region 4
- ✓ City of Arvada
- ✓ City of Cheyenne
- ✓ City of Colorado Springs
- ✓ City of Fountain
- ✓ City of Gilcrest
- ✓ City of Glenwood Springs
- ✓ City of Grand Junction
- ✓ City of Montrose
- ✓ Colorado Northwestern Community College
- ✓ Colorado School of Mines
- ✓ David Evans & Associates
- ✓ Delta County
- ✓ Denver International Airport
- ✓ EPP Associates
- ✓ Flatirons Surveying
- ✓ GeoSurv
- ✓ Hixon Manufacturing & Supply
- ✓ Intuicom
- ✓ King Surveyors
- ✓ Leica
- ✓ Mesa County
- ✓ Nolte & Associates
- ✓ Polaris Surveying
- ✓ Sopris Engineering
- ✓ State of Utah Reference Network
- ✓ Trimble

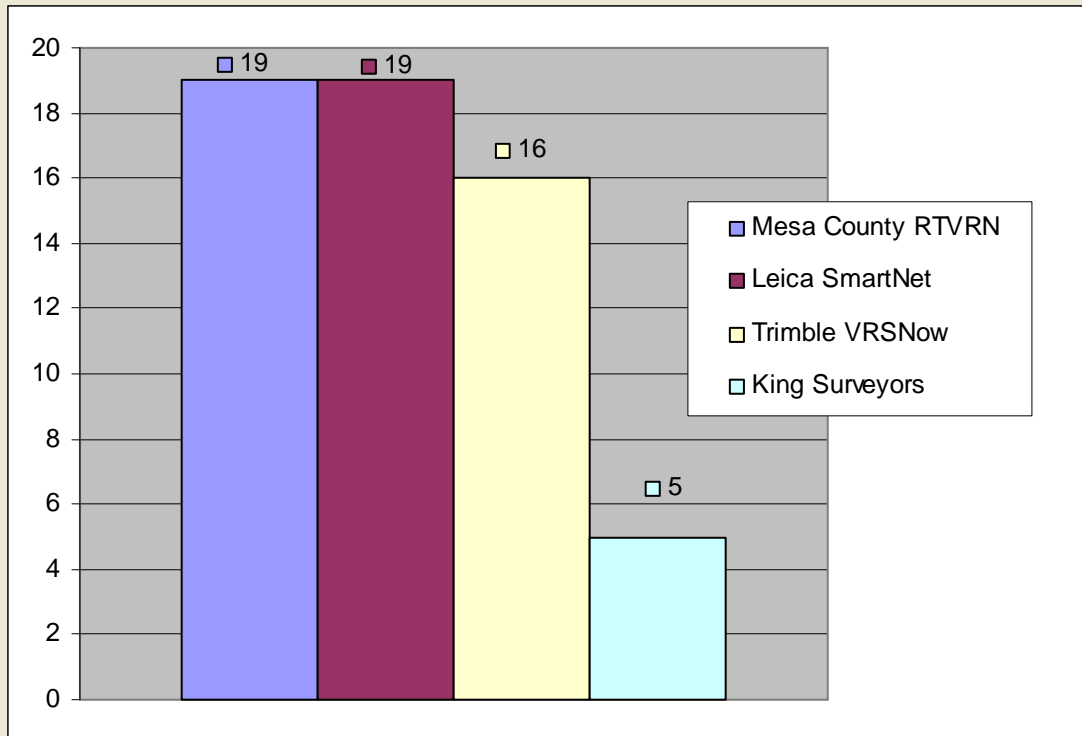
* Based on the latest CSRN information available.



Colorado Spatial Reference Network
of the Professional Land Surveyors of Colorado, Inc.

Number of real time reference network stations operating in Colorado?

Answer * = 54



* Based on the latest CSRN information available.

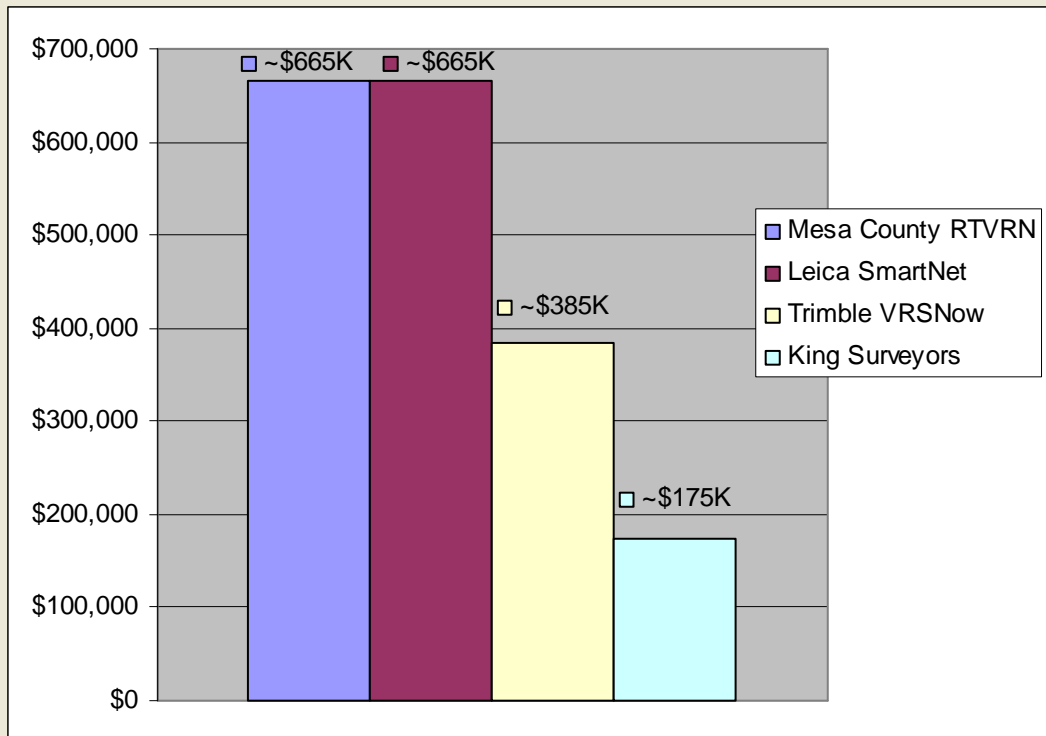
Trimble VRSNow includes King Surveyors Stations.



Colorado Spatial Reference Network of the Professional Land Surveyors of Colorado, Inc.

Estimated partner investments made in all real time reference network stations currently operating in Colorado?

Answer* = ~\$1.9 Million



* Based on \$35K per station cost estimate.

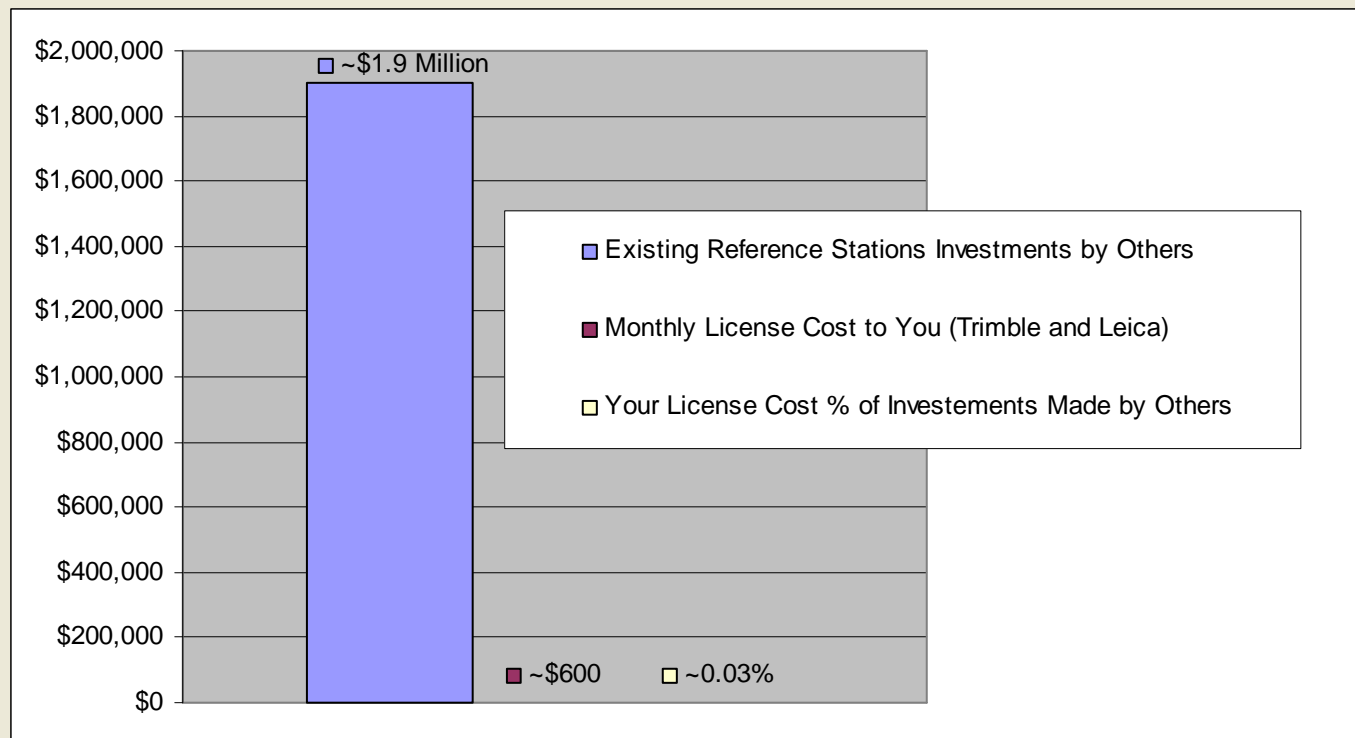
* Does not include data processing or communication.



Colorado Spatial Reference Network
of the Professional Land Surveyors of Colorado, Inc.

Estimated monthly license cost to you?

Answer* = ~\$600 (Combined cost estimate per each Trimble and Leica license purchased separately)
(Mesa County RTVRN may be limited to Mesa County projects only)



* Individual plans may vary.



Colorado Spatial Reference Network
of the Professional Land Surveyors of Colorado, Inc.

For questions or comments please contact the CSRN at:

www.CSRN.us

Thank You